



ROYAL WESTERN
YACHT CLUB OF ENGLAND

PLYMOUTH RACEWEEK 2024

July 11th – July 14th 2024

2024 IRC Southwest Championships

July 12th – 14th 2024

Sailing Instructions

SAILING INSTRUCTIONS

Competitors and their families are invited by the Flag Officers of The Royal Western Yacht Club to be temporary members of the Club on Saturdays for the duration of the regatta and to have full use of the bar, catering and other facilities of the Club.

1 RULES

- 1.1 The event will be governed by the 'Rules' as defined in The Racing Rules of Sailing (RRS), prescriptions and the 2024 IRC Rule.
- 1.2 The series is open to all boats holding a valid IRC Certificate. Depending on the number of entries the fleet may be split into separate classes.
- 1.3 Plymouth is a Naval and Commercial Port where shipping movements can be frequent and must have priority. Boats, at all times, must keep clear of ships leaving or entering the port and obey instructions from the Race Committee where avoiding action is necessary. Failure to obey Race Committee instructions may result in a protest being lodged and the penalty may extend to disqualification from further races.
- 1.4 Competitors should note that the Royal Western Yacht Club implements the RYA Racing Charter and that they will be expected to sail in compliance with it.
- 1.5 World Sailing Offshore Special Regulations (OSR) 2024 - 2025 Appendix B shall apply.
- 1.5 Rule 44.1 is changed so that the Two Turns Penalty is replaced by the One Turn Penalty.
- 1.6 Under Rule 87, IRC Rule 22.4.2 is replaced with:
"The maximum number of crew that may sail aboard a boat shall be the crew number printed on the certificate plus one. There is no weight limit."
- 1.7 For safety reasons, no boats shall race with anchors mounted on, or in front of, their stem-head rollers or other bow fittings. Boats shall not sail with their anchors projecting over the bow.

2 CHANGES TO SAILING INSTRUCTIONS

- 2.1 Any changes to Sailing Instructions will be posted on the Official Notice Board by 0800 on the day they will take effect (See SI 3.1). They may be repeated via VHF up to 5 minutes before the first warning signal of the day, except that any change to the schedule of races will be posted by 2000 on the day before it will take effect.

3 COMMUNICATION WITH COMPETITORS

- 3.1 Notices to competitors will be posted on the official Notice Board which is on the event website located at <https://rwy.org/club-racing/plymouthraceweek/>. These may also be displayed within the Royal Western Yacht Club (RWYC).
- 3.2 On the water the Race Committee will monitor and communicate with competitors via VHF Ch 77.

4 SIGNALS MADE ASHORE

- 4.1 Signals made ashore will be displayed at the RWYC flagstaff.
- 4.2 When flag AP is displayed ashore, ‘1 minute’ is replaced with ‘not less than 30 minutes’ in the race signal AP. This changes the meaning of AP in Race Signals.
- 4.3 When Flag Y is displayed ashore, Rule 40 always applies whilst afloat.

5 EVENT SCHEDULE

5.1 Schedule

DATE	TIME	ACTIVITY
Thursday 11 th July	TBC 1830	On-line Briefing for IRC Class and Plymouth Gin Fun Race Plymouth Gin Fun Race (Not counting towards the final results)
	2000	Racing Supper
Friday 12 th July	1025	First Warning Signal 1 st race of the day.
	1930	4 races scheduled for IRC Class. Social
Saturday 13 th July	1025	First Warning Signal 1 st race of the day.
	1930	4 races scheduled for IRC class Social – BBQ Party
Sunday 14 th July	1025	First Warning signal 1 st race of the day.
	1600	2 races scheduled for IRC Class. Day and Overall Prizegiving

- 5.2 To alert boats that a race or sequence of races will begin soon, an orange flag will be displayed on the Committee Boat with one sound signal at least 5 minutes before a warning signal is made.
- 5.3 On Friday and Saturday, no warning signal will be made after 1600hrs and on Sunday, no warning signal will be made after 1300hrs.
- 5.4 At the discretion of the Race Committee, one extra race in any day may be sailed, providing races become no more than one race ahead of schedule and that any change made is according to the provisions of the Sailing Instructions.

6 CLASS FLAGS AND SIGNALS

- 6.1 Class flag will be: **Numeral 1**
- 6.2 Racing pennants should be flown from the backstay before and during racing. Where a boat does not have a backstay, it should be flown in a prominent position.
- 6.3 The first warning signal is scheduled to be given at 10.25. Following race will start as soon as practically after the completion of the preceding race.

7 RACING AREA

- 7.1 The racing area will be Plymouth Sound – either north (Area K1) or south (Area K2) of Plymouth Breakwater. See Appendix A.

8 COURSES

- 8.1 Courses will be a combination of Windward/ Leeward (W/L), designation **W** and Round the Cans (RTC) designation **C**. RTC courses will use Navigational Marks and laid marks as shown in **Appendix A**.
- 8.2 Windward – leeward course: Course boards on the side of the Committee Vessel will display the course letter of the windward mark and the leeward mark (see **Appendix B**).
- 8.3 Round the Cans course: letter boards will be displayed on the side of the Committee Vessel indicating the course configuration in accordance with the chartlet in **Appendix A**. The background colour (**Green** – starboard or **Red** – Port) of the boards will indicate which side each mark should be left
- 8.4 The Committee Vessel may display the approximate compass bearing and distance to the first mark together with the number of laps to be sailed. This may also be broadcast on VHF Ch 77 prior to the warning signal.

9 THE START

- 9.1 The starting line will be between the Committee Boat mast displaying an orange flag and a yellow pillar mark (or as advised at the briefing on Thursday 11th July).
- 9.2 Boats not crossing the start line within 5 minutes of their starting signal will be classified DNS. This changes rule 35, A4 and A5.
- 9.3 In the event of an individual recall, a message may be broadcast on VHF Channel 77. The failure to receive such transmissions shall not constitute grounds for redress. This adds to Rule 29.1 and Rule 62.1.
- 9.4 In the event of a general recall, the First Substitute will be removed after **THREE** minutes. The new start sequence will begin **ONE** minute after the removal of the First Substitute. This changes Rule 29.2.

10 SHORTENED COURSE

- 10.1 For W/L courses when Code Flag S is displayed, boats shall round the next mark and proceed to the finish.
- 10.2 For RTC courses, the course may be shortened at any mark.

11 CHANGE OF THE NEXT LEG OF THE COURSE

- 11.1 To change the windward leg of the course, the race committee will display Flag C and will lay an alternative mark as described in Addendum B and remove the original mark as soon as is practicable. When a subsequent change is required, the new mark will be the original mark. This changes Rule 33.
- 11.2 To change the next leg of the course (other than the windward leg), the race committee will move the original mark or the finish line to a new position.

12 THE FINISH

- 12.1 Unless the course is shortened under Rule 32.2, the finishing line will be the same as the start line.
- 12.2 For the final race on each day, all boats may finish on the RWYC club line.
- 12.3 Whilst racing, boats are prohibited from entering the Controlled Mooring Area located north of Mountbatten peninsula and south of the Plym navigation channel. Boats must remain north of a line extending from the westerly mooring buoy positioned on the south side of the Plym navigation channel, east through each mooring buoy on the northern boundary of the Controlled Mooring Area and west of a line extending from the most westerly mooring buoy on the south side of the Plym navigation channel due south to the Mountbatten peninsula. The prohibited area defined above ranks as an obstruction to sea room under RRS.

13 PENALTY SYSTEM

- 13.1 A boat that may have broken a rule of Part 2, or rule 31 or 42, may, after finishing the race concerned and before the start of a related protest hearing, notify the race committee that she accepts a 30% scoring penalty as stated in rule 44.3(c), (excepting that the minimum penalty is two places if that does not result in a score worse than DNF). This penalty does not reverse an OCS score or a disqualification under rule 30.3, if that does not result in a score worse than DNF. It is not available for a breach of rule 2 or of class rules or for gross misconduct under rule 69. Nor is it available to a boat that caused injury, serious damage or gained a significant advantage by her breach: in these circumstances, her penalty is to retire.
- 13.2 When an Exoneration Penalty is accepted, (a) neither the boat nor a protest committee may then revoke or remove the penalty. (b) The boat shall not be penalized further in a protest hearing when the protest committee decides that it was appropriate to the facts found and the applicable rules.

14 TIME LIMITS

- 14.1 The time limit for Windward/ Leeward races will be 90 minutes
- 14.2 The time limit for Round the Cans races (RTC Race) will be 90 minutes
- 14.3 Boats failing to finish within 30 mins after the second boat sails the course and has finished will be scored DNF. This changes RRS rules 35 and A4.

15 HEARING REQUESTS

- 15.1 Hearing Request forms are available on the event website or from the race office at the R-WYC. Protests shall be delivered there within the appropriate protest time limit.
- 15.2 The protest time limit is 75 minutes after the last boat has finished the last race of the day.
- 15.3 Notices of protests by the Race Committee or Protest Committee to inform boats under Rule 61.1 (b).

- 15.4 Notices will be posted within 30 minutes of the protest time limit to inform competitors of hearings in which they are parties or named as witnesses. Hearings will be held at RWYC, beginning as soon as possible, after posting. Failure to be present will result in the hearing proceeding in accordance with Rule 63.3 (b).
- 15.5 Breaches of instructions 9.2, 17, 18, and 20, will not be grounds for a protest by competitors. This changes rule 60.1(a). Penalties for these breaches may be less than disqualification if the protest committee so decides.
- 15.6 Rules Disputes Procedures: The Post-Race Penalty and Advisory Hearing and RYA Arbitration procedures of the RYA Rules disputes procedures shall apply. The outcome of an RYA arbitration can be referred to a protest committee, but an arbitration cannot be reopened or appealed.

16 SCORING

- 16.1 The low point scoring system of Appendix A will apply.
- 16.2 2 races are required to constitute a series.
- 16.3 When 4 races or fewer have been completed, a boat's series score will be the total of her race scores.
- 16.4 When 5 or more races have been completed a boat's series score will be the total of her race scores, excluding her worst score.

17 SAFETY REGULATIONS

- 17.1 A boat that retires from a race shall notify the race committee on VHF Channel 77 at the earliest opportunity.

18 REPLACEMENT OF CREW OR EQUIPMENT

- 18.1 Substitution of crew will not be allowed without prior written approval of the race committee.
- 18.2 Substitution of damaged or lost equipment will not be allowed unless approved by the race committee. Requests for substitution shall be made to the committee at the first reasonable opportunity.

19 SUPPORT BOATS

- 19.1 Support personnel shall stay outside areas where boats are racing from the time of the preparatory signal for the first class to start until all boats have finished or the race committee signals a postponement, general recall or abandonment.

20 RADIO COMMUNICATION

- 20.1 All boats shall carry and operate VHF radios to monitor Race Committee broadcasts on VHF Channel 77.
- 20.2 The failure to receive any Regatta Committee transmissions shall not constitute grounds for redress.

20.1 A boat shall neither make radio transmissions while racing nor receive radio communications not available to all boats. This restriction also applies to mobile telephones. All boats shall monitor VHF channel 77.

21 PRIZES

21.1 Overall prizes will be awarded at prize giving at the end of the regatta. Other prizes will be awarded at the discretion of the Race Committee.

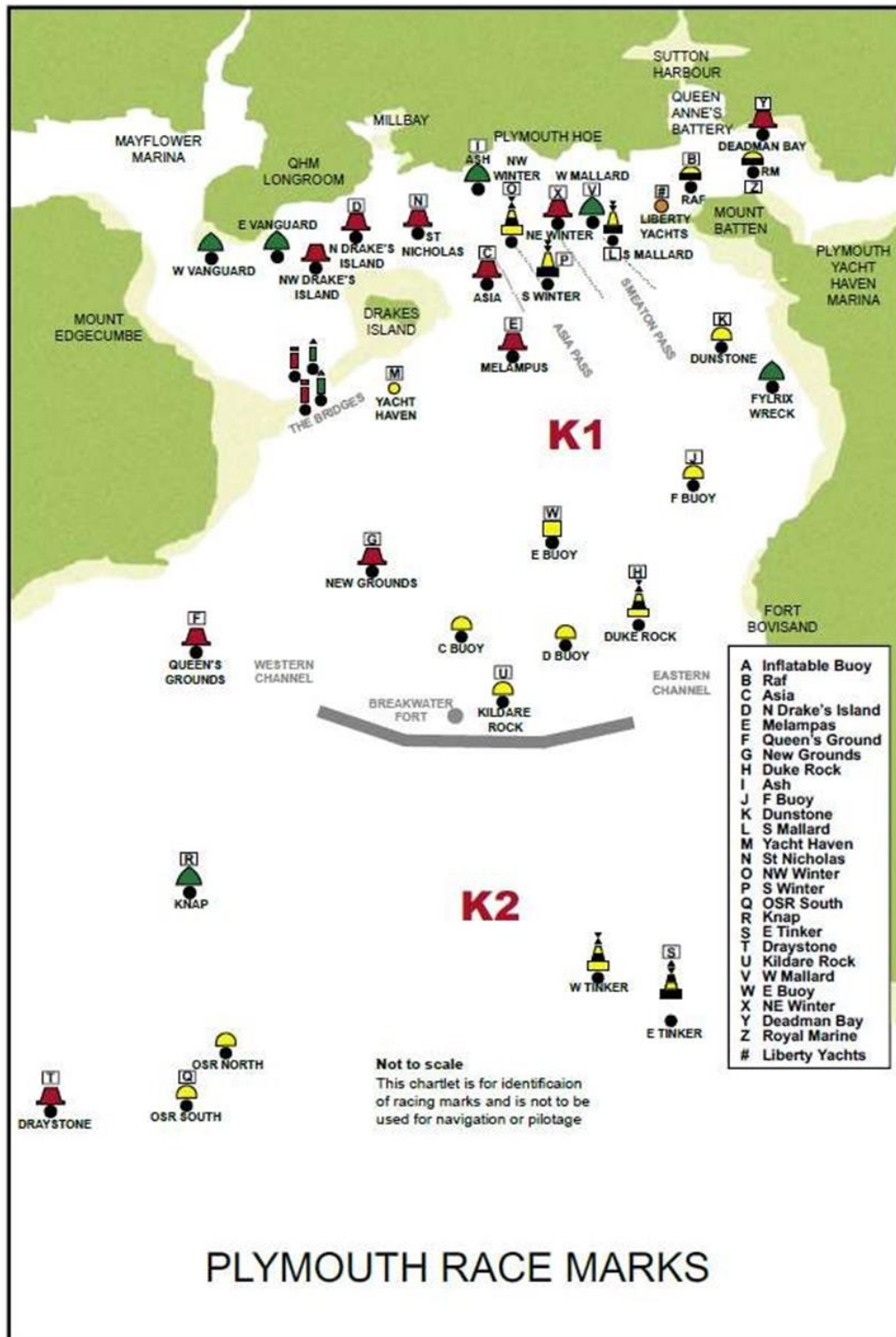
22 INSURANCE

Each participating boat shall be insured with valid third-party liability insurance with a minimum cover of £3m per event or the equivalent.

End

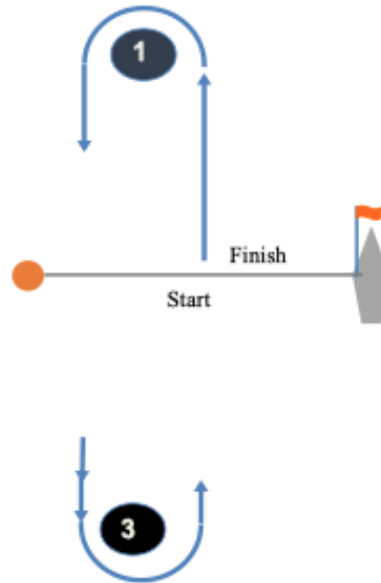
Appendix A

Race Area and Navigational Marks to be used.



Appendix B

Windward Leeward Course; Signal W



Signal	Mark Rounding Order
W2	Start - 1 - 3 - 1 - 3 - Finish
W3	Start - 1 - 3 - 1 - 3 - 1 - 3 - Finish
W4	Start - 1 - 3 - 1 - 3 - 1 - 3 - 1 - 3 - Finish

Mark Description

- 1 To be advised
- 3 To be advised

**Alternative windward mark
Start and Finish**

To be advised
Orange Pillar