



## **The ROYAL WESTERN YACHT CLUB of ENGLAND**



**The Royal Western Yacht Club of England**

## Dear Competitor

Welcome to our 2011 Racing Program which we have again amended to suit our competitor's needs. Following feedback we will now have back to back racing on Saturday afternoons about once a month. We have also come up with a new offshore championship that will cater not only to the fully crewed boats, but those who would also like to race two handed. If there is a demand for a single handed class this may be accommodated.

Competitors should note that The Royal Western Yacht Club implements the RYA Racing Charter and that they will be required to undertake to sail in compliance with the Charter, which can be found at the front of the RYA rule book (Racing Rules of Sailing 2009-2012), on the Club website, the club notice board or at [www.rya.org.uk/racing/charter](http://www.rya.org.uk/racing/charter). NOTE; Class flags have changed to simplify classes, this will be in line with all PPSA clubs.

We are continuing to improve our race management and welcome constructive feedback. Should you wish to volunteer to assist, you will be more than welcome whether on an occasional basis or as a larger commitment.

Competitors, families and friends are invited to make full use of the RWYC bar and catering facilities during and after each race. The Annual Prize Giving is scheduled for Friday 12<sup>th</sup> November 2011 and all competitors, families and friends are welcome to attend

Along with racing the club also has a healthy Cadet section and for those of you that have an interest in dinghy sailing we have a selection of Mirror, Feva, RS Vision and Laser 3000 dinghies. Peter Noakes and his cadet team have done a considerable amount of ground work in preparing these and it is planned for 2011 to allow members to hire them at a small cost. Details will be published on the RWYC website.

We also have a very active cruising section run by Nigel Green, we hope to see cruisers shadow and join with us on our coastal races. So whatever your tastes in sailing hopefully we can provide some method for you to pursue enjoyment in this sport.

Fair winds and good sailing

*Roger Irvine*

Rear Commodore (Sail)

# INSHORE AND OFFSHORE RACES 2011

## Notices of Race & Sailing Instructions

### CONTENTS

PROGRAMME	3
WELCOME	5
CLUB RACING RULES	6
1884 TROPHY SERIES	12
AUTUMN SERIES	13
ICICLE SERIES	14
FALMOUTH – FOWEY – PLYMOUTH TRIANGLE	16
OFFSHORE CHAMPIONSHIPS	18
AROUND GUERNSEY	20
FURTHER INFORMATION	21
COURSES	22
RACING MARKS	25
EMERGENCY DETAILS	26

# RACE PROGRAMME 2011

## Inshore Racing

Race/Series	Dates	Classification
1884 Series	Series 1 20 April – 1 June	Club Inshore
	Series 2 8 June – 20 July	
	Series 3 27 Jul – 31 August	
RWYC Inshore Championship	14 May - 18 June 23 July - 13 August 3 September - 8 October	Championship Inshore
Squib National Championship	25 June 1 July	National Championship
Plymouth Race Week	7 – 10 July	National Championship & Inshore
Autumn Series	18 September - 30 October	Club Inshore
Icicle Series	6 November - 18 December	Club Inshore

## Offshore Championship

Race/Series	Dates	Classification
Alan Cummings & Co Falmouth – Fowey Triangle	30 April – 2 May	Cat 4
50 Mile Triangle	21 May	Cat 4
Eddystone – Hands Deep Triangle	11 June	Cat 4
Around Guernsey	17 - 19 June	Cat 3
Wolf Rock Race	1 - 3 July	Cat 3
Torbay – Dartmouth Triangle	27 August – 29 August	Cat 4
Coastal Flexi Course	17 September	Cat 4
30 Mile Triangle	1 October	Cat 4

## Oceanic Races

<b>Race/Series</b>	<b>Dates</b>	<b>Classification</b>
UK Fastnet 6.50	15 May	One Design Oceanic Cat 2
Fastnet Race	7 – 12 August	Oceanic Cat 2

## Other Events

<b>Race/Series</b>	<b>Dates</b>	<b>Classification</b>
White Sail Challenge	21 April – 1 September	Evening Cruise
Eddystone Pursuit	16 July	Charity
Diana Princess of Wales	5 September	Charity

# CLUB RACING RULES

These rules apply to all **Royal Western Yacht Club** Notices of Race and Sailing Instructions

## 1 RULES

- 1.1 Racing will be governed by the rules as defined in The Racing Rules of Sailing (RRS).
- 1.2 Where there is a conflict between these rules and The Racing Rules of Sailing, these rules are to take priority.
- 1.3 Where boats are racing within the boundaries of a port they shall comply with such regulations as may be in force within that port. In particular, regulations regarding the safe navigation of large vessels shall be strictly observed. Competitors are referred to the Dockyard Port of Plymouth Order 1999, a copy of which is displayed on the Club notice board and website, and to Local Notices to Mariners. When the Race Committee believes that such regulations have been broken so as to bring the sport into disrepute it will act under RRS 60.2(c) requesting the Protest Committee to act under RRS 69.1(a), Allegation of Gross Misconduct.
- 1.4 RRS rules 29.2, 33, 35 and 52, and A2, A4 and A9 will be changed:  
 29.2 – General Recall – the recalled class(s) start after the last class  
 33 – Changing next leg of the course  
 35 – Time Limit – See individual races. Any boat finishing outside the time limit will be scored DNF  
 52 – Manual Power – Powered winches are allowed  
 A2, A4.2 and A9 – Scoring
- 1.5 The Exoneration Penalty (and the Advisory Hearing and RYA Arbitration) of the RYA Rules and Disputes procedures will be available. This is the preferred method of resolving disputes. See the official notice board or website for details.
- 1.6 For offshore category 4 races the ISAF Offshore Special Regulations Category 4 shall apply. Additionally boats shall carry a life raft in accordance with ISAF Offshore Special Regulations 4.20.2, or an inflatable dinghy, of which at least one half shall be properly inflated, stowed on the working deck and with inflation pump securely attached.
- 1.7 For all IRC racing, IRC Rule 22.4.2 is deleted and replaced by “The maximum number of crew that may sail aboard a boat shall be the crew number printed on her certificate plus 2”. There is no weight limit. One Designs racing in their own Class shall comply with their Class Rules. This Notice of Race may be changed by amendment or the Sailing Instructions. Changing RRS 63.7, in the event of conflict the Sailing Instructions (SI’s) shall prevail. The RYA RACING CHARTER will apply.

## 2 ELIGIBILITY AND ENTRY

- 2.1 The Royal Western Yacht Club recognises the following classes:
- 2.1.1 Monohull Yachts:

Class	Description	Sub Class	Class Flag

IRC	Boats having a valid International Race Certificate. The current list of TCCs issued by the RORC will be used in the calculation of results.	No Split A B C	1 1 2 3
PY	Boats rated as 'cruisers' and "keelboats" under the RYA Portsmouth Yardstick Scheme as administered by the Port of Plymouth Sailing Association, details of which are displayed on the RWYC notice board and website. The current list of numbers issued by the PPSA Handicapper will be used for the calculation of	No Split A B C	4 4 5 6
J24 OD	Boats having a valid measurement certificate.		J
Multihull	Boats having a valid MOCRA certificate		8

2.1.2 Class Flags shall be flown from the backstay when racing.

2.2 The Royal Western Yacht Club may recognise other classes where six or more boats wish to compete in a series. Where fewer than six entries are received, classes may be merged.

2.3 Eligible boats may enter online at [www.rwyc.org](http://www.rwyc.org) or by completing the RWYC Race Entry Form and sending it, together with the required fee, to:

The Secretariat,  
Royal Western Yacht Club,  
Queen Anne's Battery,  
Plymouth PL4 0TW

2.4 Entry is on acceptance by the Race Committee.

2.5 Late entries, with payment of an additional Late Entry fee (25%), may be accepted at the discretion of the Race Committee. Late entry fees will be strictly enforced.

### 3 **SCORING (This changes rule A2, A4, A4.2 and A9 )**

#### **Inshore races**

3.1 The number of boats entered by the start of the third week of a series will be the number of boats entered in the series (rule A9).

3.2 Each boats series score shall be the total of her race scores excluding her worst score(s) according to the number of races completed in the series:

<b>Completed races</b>	<b>Discards</b>
1 – 3	0
4 – 7	1
8 – 11	2
12 – 15	3
4 further races	1 further discard

- 3.3 A boat that did not start (DNC, DNS, OCS), did not finish (DNF), retired after finishing (RAF) or is disqualified under rule 30.3 (BFD) shall be scored points for the finish place one more than the number of boats that competed in the race. A boat that was disqualified other than under rule 30.3 (DSQ, DNE or DGM) shall be scored points for the finishing place one more than the number of boats entered in the series.
- 3.4 As provided in Rule 67, the protest committee may, without a hearing, penalize a boat that has broken rule 42.

**Offshore races**

- 3.5 The RWYC Offshore Championship will use a modified high point weighted scoring system. 100 points are available for the first boat, with each place reducing by one point to a minimum of 1 point. Each race will be weighted according to length and difficulty and this weighting will be applied to each boats score. All races to count, weighting will be applied iaw Schedule 25.3.
- 3.6 Each boats series score shall be the total of her race scores.
- 3.7 A boat that did not start (DNC, DNS, OCS), did not finish (DNF), retired after finishing (RAF) or is disqualified under rule 30.3 (BFD) shall be scored points for the finish place one more than the number of boats that competed in the race. A boat that was disqualified other than under rule 30.3 (DSQ, DNE or DGM) shall be scored no points.
- 3.8 As provided in Rule 67, the protest committee may, without a hearing, penalize a boat that has broken rule 42.

**4 RADIO COMMUNICATIONS**

- 4.1 All yachts shall carry and operate a VHF radio and monitor Race Committee broadcasts.
- 4.2 The Race Committee will use VHF Ch 77.

**5 PRIZES**

- 5.1 A prize will be awarded to fully crewed and shorthanded crew in each class after the day's racing.
- 5.2 Overall and Part Series Prizes: Engraved glassware will be awarded as follows:

<b>Boats in Class</b>	<b>Prizes</b>
Up to 6	1 <sup>st</sup>
Up to 12	1 <sup>st</sup> and 2 <sup>nd</sup>
Up to 18	1 <sup>st</sup> , 2 <sup>nd</sup> and 3 <sup>rd</sup>
Every additional 6 boats	1 additional prize

- 5.3
- 5.4 A Trophy will be awarded to the overall winner of each class.

**6 SIGNALS**

- 6.1 Signals made ashore will be displayed at the RWYC Flagstaff.

**7 NOTICES TO COMPETITORS**

- 7.1 Notices to competitors will be posted on the notice board at the RWYC.
- 7.2 Any change to the sailing instructions will be posted at least five hours before it will take effect.

## 8 THE COURSE

- 8.1 For inshore races, the course will be from the Start Line, around the Marks in the order indicated in Appendix (Courses), then to the Finish Line.
- 8.2 For Course 1 the approximate bearing of the windward mark will be displayed on the Committee Boat.
- 8.3 For Course 2 the approximate bearing of the windward mark together with the final mark will be displayed on the committee Boat and code flag F will be displayed from before the warning signal until after the start.
- 8.4 If Code Flag S is displayed below a class warning flag, that class shall round the first windward mark (yellow) only before finishing
- 8.5 For offshore races course details are either included in the notice of race, sailing instructions or will be provided at a set time before racing commences

## 9 OBSTRUCTIONS

- 9.1 Between 1 April and 31 October boats, whilst racing, shall not enter the mooring area off Mount Batten in the Cattewater. This prohibited area ranks as an obstruction under RRS 19 and RRS 20
- 9.2 The prohibited racing area is bounded on the south by Mount Batten Breakwater and on the north by a line from the western end of Mt. Batten Breakwater to the Cattewater Speed Limit Sign Buoy, through T1 (lit yellow buoy) and T4 mooring buoys to the Clovelly Bay Turning Circle Special mark (yellow buoy).

## 10 THE START

- 10.1 When a Committee Boat is used the start line will be between the mast displaying an orange flag on a Committee Boat and the outer distance mark, an orange pillar buoy. When a yellow buoy is attached to the Committee Vessel it shall be considered as part of the Starting Mark
- 10.2 The approximate position of the Committee Boat may be broadcast on VHF Ch 77 from approximately 30 minutes before the first warning signal. The failure to receive such transmissions shall not constitute grounds for redress.
- 10.3 When the RWYC line is used the start line will be an extension of a line through the Club Flagstaff and a black/yellow post in front of the Club. The outer limit of the RWYC line will be an orange or yellow harbour mark approximately on the line unless there is a laid inflatable orange pillar buoy, which will then be the outer distance mark.
- 10.4 All boats shall pass close to the Committee Boat on the side opposite to the Start Line or under the RWYC platform (if being used for starting) before the start of each race with mainsails hoisted for identification.
- 10.5 Boats whose warning signal has not been made shall avoid the starting area.
- 10.6 For offshore races  
In order to achieve a windward start from the Committee Vessel the Race Committee may designate a mark to be rounded before leaving Plymouth Sound. This mark will be indicated by a lettered board displayed on the side of the Committee Vessel.

## 11 RECALLS (This changes rule 29.2)

- 11.1 A broadcast message may be transmitted on VHF Ch 77 at least one minute after the start. The failure to receive such transmissions shall not constitute grounds for redress.

- 11.2 In the event of a general recall the First Substitute will be removed after approximately four minutes and the class or classes concerned will start at five minute intervals after the last class in the programme and in the same order as that in which the general recalls occurred.

## 12 **CHANGING THE NEXT LEG OF THE COURSE (This changes rule 33)**

- 12.1 A radio message on Ch 77 will detail any course change. The failure to receive such transmissions shall not constitute grounds for redress.
- 12.2 The change will be signaled before the leading boat has begun the leg, although the new mark may not yet be in position. If possible, the approximate compass bearing to the new mark may be displayed on the Race Committee vessel signaling the change of course.

## 13 **FINISH**

- 13.1 The finish line for committee boat finishes will be between the mast displaying an orange flag on the committee vessel and a Dan buoy with a blue flag.
- 13.2 The finish line for RWYC finishes will be an extension of a line through the Club Flagstaff and a black/yellow post in front of the Club. The outer limit of the RWYC line will be an orange or yellow harbour mark approximately on the line unless there is a laid inflatable orange pillar buoy, which will then be the outer distance mark.
- 13.3 For offshore races the finish line is specified for each individual race.

## 14 **TIME LIMIT**

- 14.1 Flag T will be displayed at the time limit. The displaying of Flag T will NOT be accompanied by any sound signals.

## 15 **PROTESTS**

- 15.1 For each class, the protest time limit is 60 minutes after the last boat has finished the days racing. The same time limit applies to protests by the race committee and protest committee about incidents they observe in the racing area and to requests for redress.

## 16 **RETIREMENT**

- 16.1 Boats retiring shall report their retirement to the Race Committee as soon as possible but no later than 60 minutes after finishing or retiring.
- 16.2 Retirements shall be reported via VHF Ch 77 to the Committee Vessel call sign "FULMAR", or by telephone to RWYC mobile 07866 420576, or to the Race Office.

## 17 **SAILOVERS**

- 17.1 If the number of boats in a class starting a race is less than two the class the race shall be granted a sailover.

## 18 **DISCLAIMER OF LIABILITY**

- 18.1 A boat is entirely responsible for her own safety, whether afloat or ashore, and nothing, whether in the Notice of Race or Sailing Instructions or anywhere else, reduces this responsibility.
- 18.2 It is for a boat to decide whether she is fit to sail in the conditions in which she will find herself. By launching, or going to sea, the boat confirms that she is fit for those conditions and her crew is competent to sail and compete in them.

- 18.3 Nothing done by the organisers can reduce the responsibility of the boat nor will it make the organisers responsible for any loss, damage, death or personal injury, however it may have occurred, as a result of the boat taking part in the racing. The organisers encompass everyone helping to run the race and the event, and include the organising authority, the race committee, the race officer, patrol boats and beachmasters.
- 18.4 The provision of patrol boats does not relieve the boat of her responsibilities.
- 18.5 Each boat is responsible to ensure that she is equipped and seaworthy so as to be able to face extremes of weather; that there is a crew sufficient in number, experience and fitness to stand such weather; and that the safety equipment is properly maintained, stowed and in date and that the crew know how to use it.
- 18.6 The fact that a race committee conducts inspections of a boat does not reduce the responsibilities of the boat set out in these paragraphs.

19 **INSURANCE**

- 19.1 Each participating boat is required to hold adequate insurance and in particular to hold insurance against third-party claims in the sum of at least £2,000,000.

# 1884 TROPHY SERIES

**Organising Authority: The Royal Western Yacht Club of England**

## 20 NOTICE OF RACE AND SAILING INSTRUCTIONS

### 20.1 RULES

20.1.1 The 1884 TROPHY SERIES 2011 will be governed by the rules as defined in The Racing Rules of Sailing.

### 20.2 ELIGIBILITY AND ENTRY

20.2.1 The 1884 Trophy Series is open to all monohull classes recognised by the Royal Western Yacht Club.

20.2.2 Entries will be accepted up until 24 hours before a race.  
Entries accepted after this will incur a late entry fee of 25% of an Individual Race Day.

### 20.3 SCHEDULE

20.3.1 Dates of racing: Wednesdays 20 April 2011 to 31 August 2011  
Part Series One: 20 April – 1 June.  
Part Series Two: 8 June – 20 July.  
Part Series Three: 27 Jul – 31 August.

20.3.2 The scheduled time of the first warning signal each week is 1825.

20.3.3 Allocation to sub classes will be made twenty four hours before the start of the first race of the series. This will be published on the Official Notice Board and the Club website.

20.3.4 There may be up to two races a day.

20.3.5 The warning signal for the second race will be made as soon as practically possible after all boats in the class have finished or the time limit for the first race has expired.

### 20.4 FEES

<b>Entry Fee for:</b>	<b>RWYC members</b>	<b>Non-members</b>
Series	Free	£120
Part Series	Free	£ 50
Individual Race Day	Free	£ 15

To qualify for free race entry the boat must be owned or chartered by a RWYC member who must be sailing on board for the majority of the series. Evidence may be required by the Race Committee

20.5 **TIME LIMIT** (This changes rule 35) 2045 or Sunset whichever is earliest.

20.5.1 If the first boat in class finishes iaw 20.5, boats not finishing within an additional 20% of the class leader's elapsed time will be scored DNF.

# AUTUMN SERIES

**Organising Authority: The Royal Western Yacht Club of England**

## 21 NOTICE OF RACE AND SAILING INSTRUCTIONS

### 21.1 RULES

21.1.1 The AUTUMN SERIES 2011 will be governed by the rules as defined in The Racing Rules of Sailing.

### 21.2 ELIGIBILITY AND ENTRY

21.2.1 The Autumn Series is open to all monohull classes recognised by the Royal Western Yacht Club

21.2.2 Entries will be accepted up to 12pm on the Friday before the race.  
Entries accepted after this will incur a late entry fee.

### 21.3 SCHEDULE

21.3.1 Dates of racing: Sundays 18 September to 30 October 2011.

21.3.2 The scheduled time of the first warning signal each week is 0955.

21.3.3 Allocation to sub classes will be made twenty four hours before the start of the first race of the series. This will be published on the Official Notice Board and the Club website.

21.3.4 The first start will be 1000. Additional starting times and class splits will be published at least twenty four hours before the commencement of the first race.

21.3.5 There will be up to two races a day.

21.3.6 The warning signal for the second race will be made as soon as practically possible after all boats in the class have finished or the time limit for the first race has expired.

### 21.4 FEES

<b>Entry Fee for:</b>	<b>RWYC members</b>	<b>Non-members</b>
Series	Free	£ 40
Individual Race Day	Free	£ 15

21.5 To qualify for free race entry the boat must be owned or chartered by a RWYC member who must be sailing on board for the majority of the series. Evidence may be required by the Race Committee.

### 21.6 TIME LIMIT (This changes rule 35) 1330

21.6.1 If the first boat in class finishes iaw 21.6, boats not finishing within an additional 20% of the class leader's elapsed time will be scored DNF.

# ICICLE SERIES

**Organising Authority: The Royal Western Yacht Club of England**

## 22 NOTICE OF RACE AND SAILING INSTRUCTIONS

### 22.1 RULES

1.1.1 The ICICLE SERIES 2011 will be governed by the rules as defined in The Racing Rules of Sailing.

### 22.2 ELIGIBILITY AND ENTRY

22.2.1 The Icicle Series is open to all monohull classes recognised by the Royal Western Yacht Club

22.2.2 Entries will be accepted up to 12pm on the Friday before the race. Entries accepted after this will incur a late entry fee.

### 22.3 SCHEDULE

22.3.1 Dates of racing: Sundays 6 November to 18 December 2011.

22.3.2 The scheduled time of the first warning signal each week is 0955.

22.3.3 Allocation to sub classes will be made twenty four hours before the start of the first race of the series. This will be published on the Official Notice Board and the Club website.

22.3.4 The first start will be 1000. Additional stating times and class splits will be published at least twenty fours before the commencement of the first race.

22.3.5 There may be up to two races a day.

22.3.6 The warning signal for the second race will be made as soon as practically possible after all boats in the class have finished or the time limit for the first race has expired.

### 22.4 FEES

<b>Entry Fee for:</b>	<b>RWYC members</b>	<b>Non-members</b>
Series	Free	£ 40
Individual Race Day	Free	£ 15

22.5 To qualify for free race entry the boat must be owned or chartered by a RWYC member who must be sailing on board for the majority of the series. Evidence may be required by the Race Committee

### 22.6 TIME LIMIT (This changes rule 35) 1330

22.6.1 If the first boat in class finishes iaw 22.6 boats not finishing within an additional 20% of the class leader's elapsed time will be scored DNF.

# RWYC Inshore Championship Series

Organising Authority: The Royal Western Yacht Club of England

## 23 NOTICE OF RACE AND SAILING INSTRUCTIONS

### 23.1 RULES

### 23.2 ELIGIBILITY AND ENTRY

1.1.2 The RWYC Inshore Championship is open to all monohull classes recognised by the Royal Western Yacht Club

1.1.3 Entries will be accepted up to 12pm on the Friday before the race.  
Entries accepted after this will incur a late entry fee.

### 23.3 SCHEDULE

1.1.4 Dates of racing: Saturdays; 14 May, 18 June, 23 July, 13 August, 3 September, 8 October.

1.1.5 The scheduled time of the first warning signal each week is 1325

1.1.6 Allocation to sub classes will be made twenty four hours before the start of the first race of the series. This will be published on the Official Notice Board and the Club website.

1.1.7 The first start will be 1330. Additional starting times and class splits will be published at least twenty four hours before the commencement of the first race.

1.1.8 There will be up to four races a day, with the last race starting no later than 1700..

1.1.9 The warning signal for the second race and subsequent races will be made as soon as practically possible after all boats in the class have finished or the time limit for the first race has expired.

### 23.4 FEES

<b>Entry Fee for:</b>	<b>RWYC members</b>	<b>Non-members</b>
Series	£75	£125
Individual Race Day	£20	£30

23.5 To qualify for reduced race entry the boat must be owned or chartered by a RWYC member who must be sailing on board for the majority of the series. Evidence may be required by the Race Committee

23.6 TIME LIMIT (This changes rule 35) 1800

If the first boat in class finishes iaw 23.6, boats not finishing within an additional 20% of the class leader's elapsed time will be scored DNF.

# 2011 FALMOUTH – FOWEY – PLYMOUTH TRIANGLE

**Organising Authority: The Royal Western Yacht Club of England**

There will be a Reception and Race Briefing in the RWYC on Friday 29 April, 2011 starting at 1830.

Receptions will be held at 1930 in the Royal Cornwall Yacht Club on the evening of Saturday 30 April 2011 and the Royal Fowey Yacht Club on the evening of Sunday 1 May 2011.

Please ensure when using berths allocated by the Harbour Master for named clubs that only those “Reserved for RWYC” are used.

## 24 NOTICE OF RACE AND SAILING INSTRUCTIONS

### 24.1 RULES

1.1.10 The FALMOUTH-FOWEY-PLYMOUTH TRIANGLE 2011 will be governed by the rules as defined in The Racing Rules of Sailing.

### 24.2 ELIGIBILITY AND ENTRY

1.1.11 The Triangle is open to the PY class (including J24), the IRC class (including J80) and multihull boats may race fully crewed, two handed or single handed

1.1.12 Entries will be accepted before 12pm on the Thursday before the race. Entries accepted after this will incur a late entry fee.

### 24.3 SCHEDULE

1.1.13 Dates of racing: 30 April, 1 May and 2 May 2011.

1.1.14 Allocation to sub classes will be made twenty four hours before the start of the first race of the series. This will be published on the Official Notice Board and the Club website.

1.1.15 The start times for each class are as follows:

Class	Start Time		
	Plymouth – Falmouth 30 April	Falmouth – Fowey 1 May	Fowey – Plymouth 2 May
PY B	0850	1030	0910
PY A	0900	1040	0920
IRC B	0910	1050	0930
IRC A	0920	1100	0940
MOCRA	0930	1110	0950

## 24.4 FEES

<b>Entry Fee for:</b>	<b>RWYC members</b>	<b>Non-members</b>
Triangle (3 legs)	£ 30	£ 60
Individual Leg	£ 15	£ 25

To qualify for reduced race entry the boat must be owned or chartered by a RWYC member who must be sailing on board. Evidence may be required by the Race Committee

### COURSE & FINISH

- 1.1.16 Plymouth – Falmouth. From the Start Line, mark in Plymouth Sound if designated, Fowey No 5 Buoy (50°06.8'N, 4°30.7'W) to STARBOARD, then to the Finish Line. The Finish Line will be between Black Rock Beacon bearing 091°M and the RCYC mast on the foreshore at (bearing 271°M from Black Rock Beacon). Shortened Course (Flag S over Class Warning Signal): omit Fowey No 5 Buoy (36nm).
- 1.1.17 Falmouth – Fowey. From the Start Line between the Flagstaff on the foreshore at Pendennis Point at the STARBOARD end and Black Rock Beacon at the PORT end of the line; Yellow 2.6mtr Weather Buoy QF5 10s in a position approximately 1 Nm NE of Porth Kerris Point (50°04.75'N 005°02.85'W) to Port, then to the Royal Fowey Yacht Club (RFYC) Finish Line leaving GWINEAS and CANNIS ROCKS buoys to PORT (25nm). The Finish Line will be an extension of the line joining the RFYC Flagstaff and the white line on the building behind the staff and leaving the silver turning buoy to STARBOARD Shortened Course (Flag S over Class Warning Signal): omit Yellow 2.6mtr Weather Buoy QF5 10s (22nm).
- 1.1.18 Fowey – Plymouth. From the Start Line (to be published and displayed in the RFYC) to the Finish Line (24nm). The finish line will be an extension of a line through the RWYC Flagstaff and a black/yellow post in front of the Club. The outer limit of the RWYC line will be an orange or yellow harbour mark approximately on the line unless there is a laid inflatable orange pillar buoy, which will then be the outer distance mark. The mooring area north of Mount Batten Breakwater is designated an obstruction. Racing through the moorings is prohibited

It is intended that boats will be timed over the Finish Line but they shall, nevertheless, record their own finish time, together with the names and sail numbers of the boats ahead and astern of them when ascertainable. This information shall be kept and delivered to the Race Committee if so required.

TIME LIMIT (This changes Rule 35)

Boats not finishing before the start of their next leg will be scored DNF. Leg three from Fowey to Plymouth time limit for is 1600 for all classes.

### PRIZES

- 1.1.19 A prize will be presented to the winner of each class at the end of every leg.

### SELF STEERING

- 1.1.20 The use of self steering devices is permitted.

# RWYC Offshore Championship

**Organising Authority: The Royal Western Yacht Club of England**

## 25 NOTICE OF RACE AND SAILING INSTRUCTIONS

### 25.1 RULES

1.1.21 The RWYC Offshore Championship 2011 (Including the Alan Cummings & Co Falmouth – Fowey Triangle) will be governed by the rules as defined in The Racing Rules of Sailing.

### 25.2 ELIGIBILITY AND ENTRY

1.1.22 The Triangle is open to the PY class, the IRC class (including J80) and multihulls, which meet the ISAF Offshore safety requirements. Boats may race fully crewed, two handed or single handed.

1.1.23 Entries will be accepted up to forty eight hours before the start of a race. Entries accepted after this will incur a late entry fee.

### 25.3 SCHEDULE

1.1.24 Dates of racing and weighting

Date	Race	Distance (approx)	First Start	Weighting
30 April 2011	Plymouth to Falmouth	35 - 42	0845	1.0
1 May 2011	Falmouth to Fowey	22 - 25	1030	0.5
2 May 2011	Fowey to Plymouth	24	0915	0.5
21 May 2011	50 Mile Triangle	50	0845	1.0
11 June 2011	Eddystone Triangle	30	0930	1.0
17 June 2011	Around Guernsey	180	1900	2.0
1 July 2011	Wolf Rock	145	1830	2.0
27 August 2011	Plymouth to Torbay	42	0845	1.0
28 August 2011	Torbay to Dartmouth	23	1030	0.5
29 August 2011	Dartmouth to Plymouth	35	0845	1.0
17 September 2011	Coastal Flexi Course	30	0930	1.0
1 October 2011	30 Mile Triangle	30	0915	1.0

- 1.1.25 Allocation to sub classes (including two handed and single handed divisions) will be published at least twenty four hours before the start of the first race of the series. This will be published on the Official Notice Board and the Club website.

#### 25.4 FEES

<b>Entry Fee for:</b>	<b>RWYC members</b>	<b>Non-members</b>
Falmouth Fowey Triangle (all)	£ 30	£ 65
Falmouth – Fowey Triangle (leg)	£ 15	£ 25
Around Guernsey	£20	£40
50 Mile Triangle	£15	£25
Eddystone Triangle	£15	£25
Wolf Rock	£20	£40
Torbay Triangle (all)	£30	£65
Torbay Triangle (leg)	£15	£25
Coastal Flexi Course	£15	£25
30 Mile Triangle	£15	£25

- 25.5 To qualify for reduced race entry the boat must be owned or chartered by a RWYC member who must be sailing on board for the race. Evidence may be required by the Race Committee.

#### 25.6 COURSE & FINISH

- 25.7 Courses will be published at least forty eight hours in advance of the start and will be available on the Club website and from the Club House. The Coastal Flexi Course will be announced on VHF Channel 77, fifteen minutes before the first start.

- 25.8 It is intended that boats will be timed over the Finish Line but they shall, nevertheless, record their own finish time, together with the names and sail numbers of the boats ahead and astern of them when ascertainable. This information shall be kept and delivered to the Race Committee if so required.

#### 25.9 TIME LIMIT (This changes Rule 35)

- 25.10 There is no time limit. Where a race has multiple legs a competitor must finish each leg before starting the next leg.

#### 25.11 PRIZES

- 1.1.26 A prize will be presented to the winner of each class at the end of every leg.

#### 25.12 SELF STEERING

- 1.1.27 The use of self steering devices is permitted.

# 2011 AROUND GUERNSEY

**Organising Authority: The Royal Western Yacht Club of England**

## **NOTICE OF RACE AND SAILING INSTRUCTIONS**

### **RULES**

The Around Guernsey race 2011 will be governed by the rules as defined in The Racing Rules of Sailing.

### **ELIGIBILITY AND ENTRY**

The race is open to the PY class and the IRC class and boats may race fully crewed and two handed.

Entries will be accepted before 12pm on the Thursday before the race.  
Entries accepted after this will incur a late entry fee.

### **SCHEDULE**

Dates of racing: 17- 19 June 2011.

The start times for each class are as follows:

<b>Class</b>	<b>START</b>
PY	1800
IRC	1810

Details for the race are:-

Distance: 180 miles

The Guernsey Race is a nonstop race from the RWYC start line in the Cattewater, Plymouth Sound out to Guernsey with a choice of two routes:-

- Approaching from the south of Guernsey passing Hanois lighthouse, St Peter Port and Platte Fougere to port
- Approaching from the north of Guernsey passing Platte Fougere, St Peter Port and Hanois lighthouse to starboard

The finish is the RWYC start/finish line in the with boats taking their finishing time and declaring it on arrival in Plymouth.

Prize giving will be on Sunday 19th June at the Royal Western Yacht Club with prizes for:-

- First boat over the finish line, First boat in IRC Class, First boat in PY Class,
- Fastest time overall

Race markers:-

- Platte Fougere - 49°30.8N 002°29.1W
- St Peter Port Lighthouse - 49°27.3N 002°31.4W
- Hanois lighthouse - 49°26.1N 002°42.1W

## FURTHER INFORMATION

Entries and all correspondence shall be directed to:-  
The Secretariat  
Royal Western Yacht Club of England  
Queen Anne's Battery  
Plymouth PL4 0TW

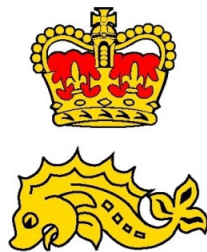
Tel. (01752) 660077 Fax. (01752) 224299  
E-mail: [admin@rwyg.org](mailto:admin@rwyg.org) website: [www.rwyg.org](http://www.rwyg.org)

Useful Telephone Numbers:

Longroom: 01752 836490  
Royal Cornwall Yacht Club: 01326 312126  
Royal Fowey Yacht Club: 01726 833573  
Salcombe Yacht Club: 01548 842593  
Dartmouth Yacht Club: 01803 832305  
Yealm Yacht Club: 01752 872291

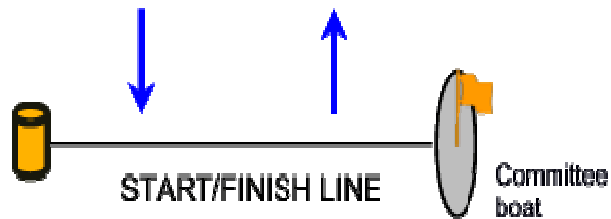
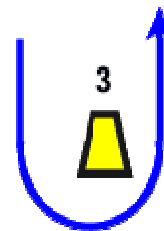
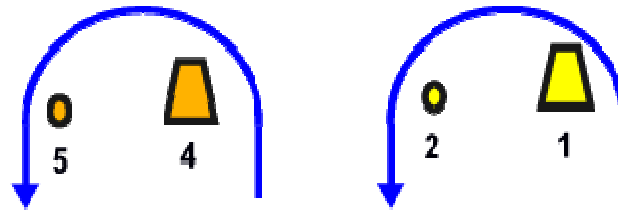
### SPONSORS

The Royal Western Yacht Club offers its grateful thanks to the sponsors of our Racing Events.



**Royal Western Yacht Club**

## APPENDIX 1



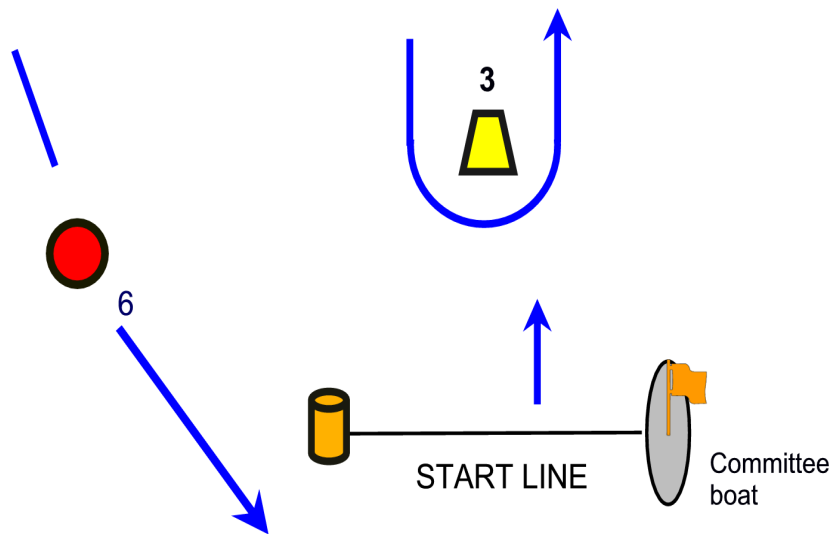
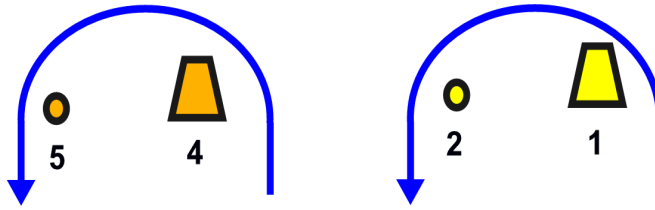
**Race Marks:-**

- Marks 1, 3: Yellow Cone
- Mark 2: Yellow Round Buoy
- Mark 4: Orange Cone
- Mark 5: Orange Round Buoy
- Port Starting Mark and
- Finishing Mark: Orange Pillar Buoy

**Course:-**

Start - 1 - 2 - 3 - 4 - 5 - Finish.  
All marks to Port.

**APPENDIX 2**

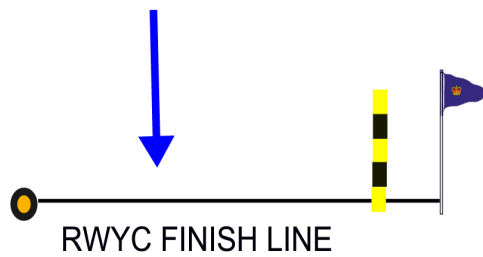


**Race Marks:-**

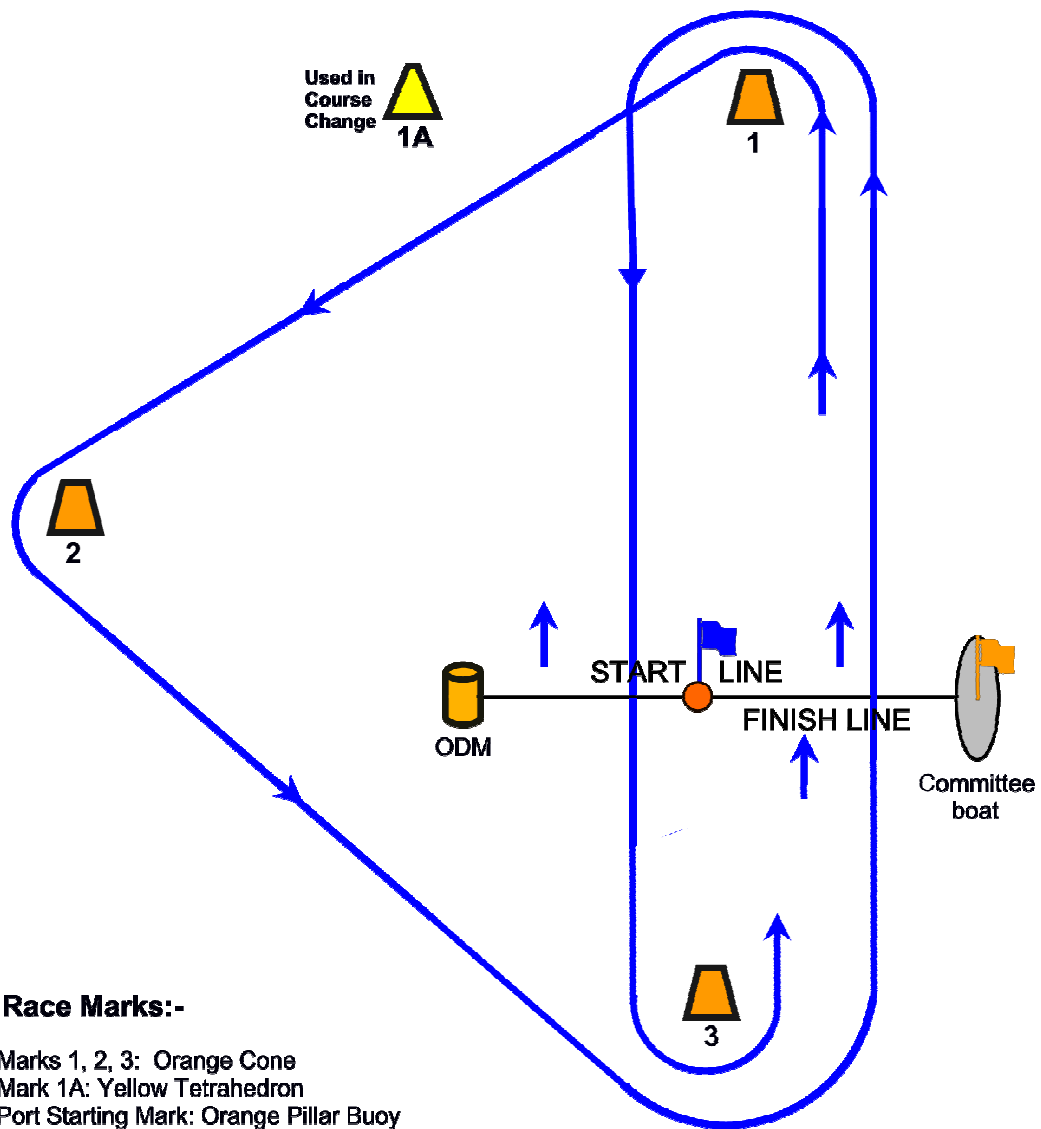
- Marks 1, 3: Yellow Cone
- Mark 2: Yellow Round Buoy
- Mark 4: Orange Cone
- Mark 5: Orange Round Buoy
- Mark 6: Lettered Race Mark
- Port Starting Mark: Orange Pillar Buoy

**Course:-**

Start - 1 - 2 - 3 - 4 - 5 - 6 - Finish.



**APPENDIX 3**



**Race Marks:-**

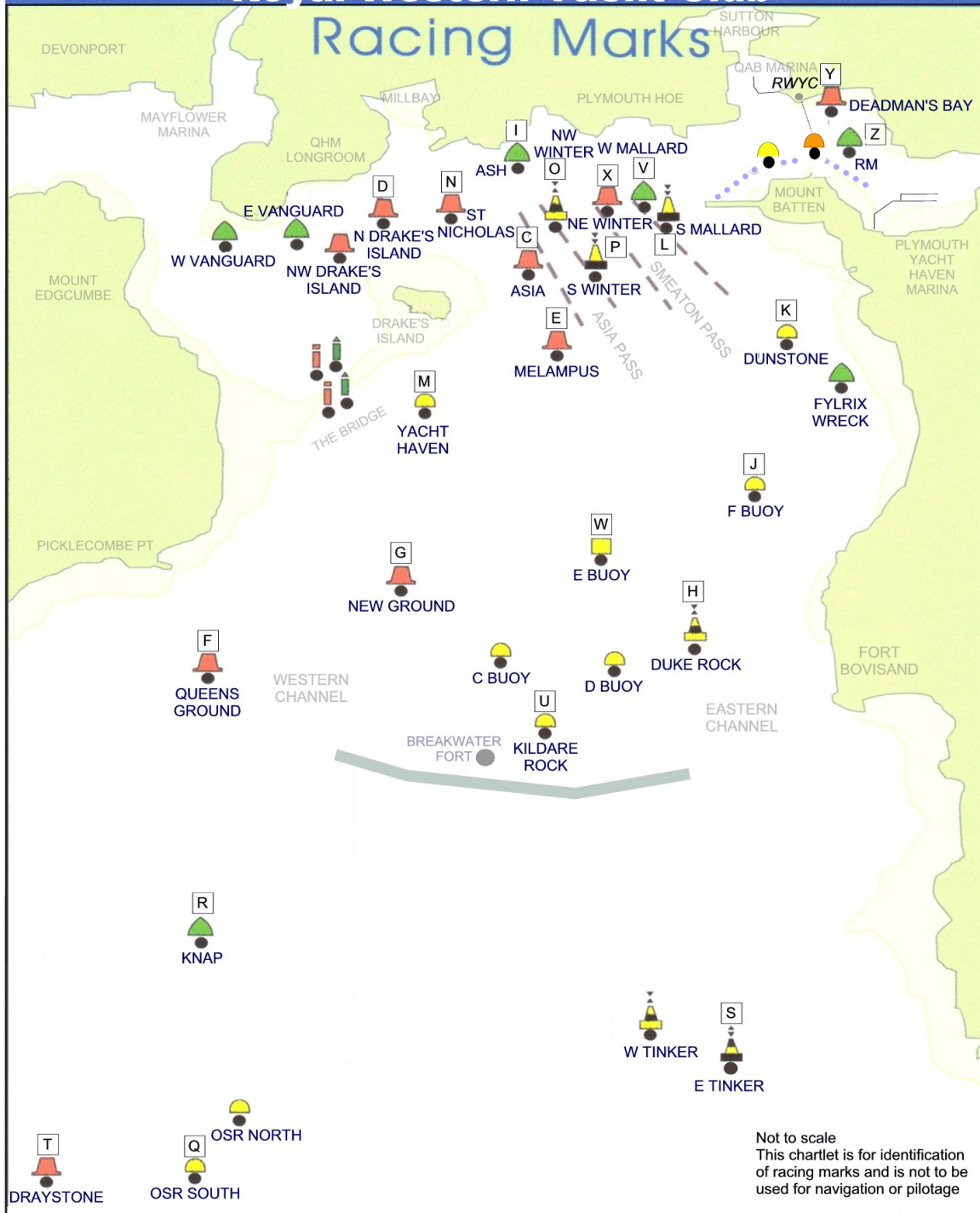
- Marks 1, 2, 3: Orange Cone
- Mark 1A: Yellow Tetrahedron
- Port Starting Mark: Orange Pillar Buoy
- Finishing Mark: Orange Danbuoy with Blue Flag

**Course:-**

Start - 1 - 2 - 3 - 1 - 3 - Finish.  
 All marks to Port.

**RACING MARKS**

## Racing Marks



Not to scale  
 This chartlet is for identification  
 of racing marks and is not to be  
 used for navigation or pilotage

- |                                       |                  |                |                  |
|---------------------------------------|------------------|----------------|------------------|
| A LAID INFLATABLE BUOY (WINDWARD)     | G NEW GROUND     | N ST NICHOLAS  | U KILDARE ROCK   |
| A+ LAID INFL BUOY (WINDWARD SPREADER) | H DUKE ROCK      | O NW WINTER    | V WEST MALLARD   |
| B LAID INFLATABLE BUOY (LEEWARD)      | I ASH            | P SOUTH WINTER | W E MOORING BUOY |
| C ASIA                                | J F MOORING BUOY | Q OSR SOUTH    | X NE WINTER      |
| D NORTH DRAKE'S ISLAND                | K DUNSTONE       | R KNAP         | Y DEADMAN'S BAY  |
| E MELAMPUS                            | L SOUTH MALLARD  | S EAST TINKER  | Z ROYAL MARINE   |
| F QUEENS GROUND                       | M YACHT HAVEN    | T DRAYSTONE    |                  |

## **Important Notice**

**The Royal Western Yacht Risk Assessment Plan requires all yachtsman to follow the simple instructions below if involved in an accident that has occurred injury to crew.**

- 1. Inform Race Officer of the situation by VHF or Mobile Phone.**
- 2. If contact with Race Officer or Committee Boat fails Please contact Longroom Port Control on VHF Chn 14**
- 3. Take injured crew to the outer arm of QAB to await Paramedics & Ambulance.**
- 4. When casualty has been transferred please inform Port Control & Race officer.**
- 5. Please raise a brief written report of incident for filing with the RWYC Admin Office.**
- 6. If a hearing is required, please inform Race Officer.**