

PLYMOUTH LOCAL NOTICE TO MARINERS 23/11

PLYMOUTH SOUND

AMERICA'S CUP CHALLENGER SERIES

10 - 18 SEPTEMBER 2011

INTRODUCTION

1. This is a direction by the Queen's Harbour Master Plymouth pursuant to the Dockyard Port of Plymouth Order 1999.
2. The Water Events Diary 2011 gave early notice of the America's Cup Challenger Series. This PLNTM gives information of timings, course and spectator areas and directs mariners accordingly. It is fundamental for port, vessel and personal safety.
3. The America's Cup Challenger Series will take place in Plymouth Sound over the period 10 – 18 September 2011. The 9 AC 45 catamarans competing will operate from Millbay Inner Basin, transiting to and from the Sound for practice and racing. They require a significant amount of sea room.
4. All vessels are to manoeuvre in accordance with the International Rules for Prevention of Collision at Sea.

Non-competitors are to give competitors a wide berth when ever possible.

TRAFFIC RESTRICTIONS

5. To ensure vessel and personal safety within the Port, the following traffic restrictions will apply during the closed periods 1300-1730 daily (See chart extract):
 - a. Restricted Area - allocated to official craft and competitors 1300 to 1730.
 - b. Spectator Areas - allocated to spectator craft.
 - c. Vessels may anchor in Cawsand Bay without restriction but are to keep Longroom informed of their intentions via VHF Channel 14.
 - d. Small vessels which require to enter/leave Plymouth between 1300 and 1730 may do so either via the Eastern Channel or via the Western Channel keeping clear of the Restricted Area.

MARSHALLING CRAFT/OFFICIAL POLICING CRAFT

6. Marshalling craft will fly a distinguishing America's Cup flag. They will patrol the restricted area to assist with the compliance of this Notice. Official Policing craft (Blue lights, QHM, MOD Police) will direct vessels that ignore the invitation of official America's Cup Marshal Vessels to remain clear of the restricted area. Mariners are reminded that failure to comply with official direction by the Officers of the Queen's Harbour Master, Cattewater Harbour Master, Sutton Harbour Lock keepers and MOD Police Officers, may result in prosecution.

SPECTATOR AREAS

7. **No unauthorised craft are permitted inside of the America's Cup course as outlined on the accompanying chartlet; this area is reserved for safety and other event craft.**

8. Spectating vessels are encouraged to use the Spectator Areas and are to keep clear of the Restricted Area during the period 1300 to 1730 daily. The boundaries of the restricted areas will be marked by Stake Boats and mariners should comply with all instructions received from the Course Marshal, the boats marked C1 – C8 or boats flying an Official America's Cup flag.

RACE ACTIVITIES

9. The race wet pit area is in Millbay Inner Basin. Pontoons will be temporarily moored alongside the southern face of the wharf prior to, during and after the event. Access into Millbay Inner Basin is prohibited to non-America's Cup craft.

10. Low flying helicopters carrying media and race officials may be encountered throughout the race series. Mariners are to be alert to their presence, the potential down draught and noise and should avoid being distracted.

11. AC45 catamarans and their support craft are exempt from the port speed limit whilst in the port during races and official practices. Outside these times they remain fully obliged to comply with the International Regulations for the Prevention of Collisions at Sea and local orders.

VESSEL TRAFFIC CONTROL

12. a) All mariners are to note and comply with the restrictions on movement in the paragraphs above.

b) Mariners wishing to proceed from the Plym, Sutton Harbour or the Cattewater to seaward are advised to do so in sufficient time before access to the Sound is restricted. Limited and controlled access close around Mount Batten Pier to Jennycliffe Bay, and close around Staddon Beacon to and from sea will be permitted.

c) During practice and competitions on the main course, access from seaward for small craft to/from the Hamoaze and River Tamar is permitted passing west of Queen's Ground buoy and through The Bridge channel. Small Craft wishing to move to and from Millbay Marina will be allowed limited and controlled movement to westwards of Millbay, close inshore under the control of Longroom PCS.

d) During port closed periods Longroom Port Control will make periodic "securite" broadcasts on VHF channels 16 and 14. Mariners seeking further information should call "Longroom" on VHF channel 14 or telephone (01752) 836528 before going afloat. The America's Cup Race Officer will use VHF Ch 69 for official information from the Race Committee and Course Marshal.

e) There will be no anchorages available for commercial vessels north of the breakwater for the duration of the event.

f) During the port closed periods large merchant vessels will not be permitted to move without the express permission of Longroom PCS. Small craft may move within spectator areas but are not to encroach onto the course.

EMERGENCY PROCEDURES

13. Responsible personnel will be stationed in the Sound with the capability to deal with emergency situations on the water. In the event of an on water emergency report to Longroom Port Control immediately on VHF Ch 14.

Longroom will require the following:-

Station calling
Nature of the incident
Position of vessel

Longroom will then:-

Acknowledge the caller
Confirm the incident
Alert the required response unit and dispatch to the position given

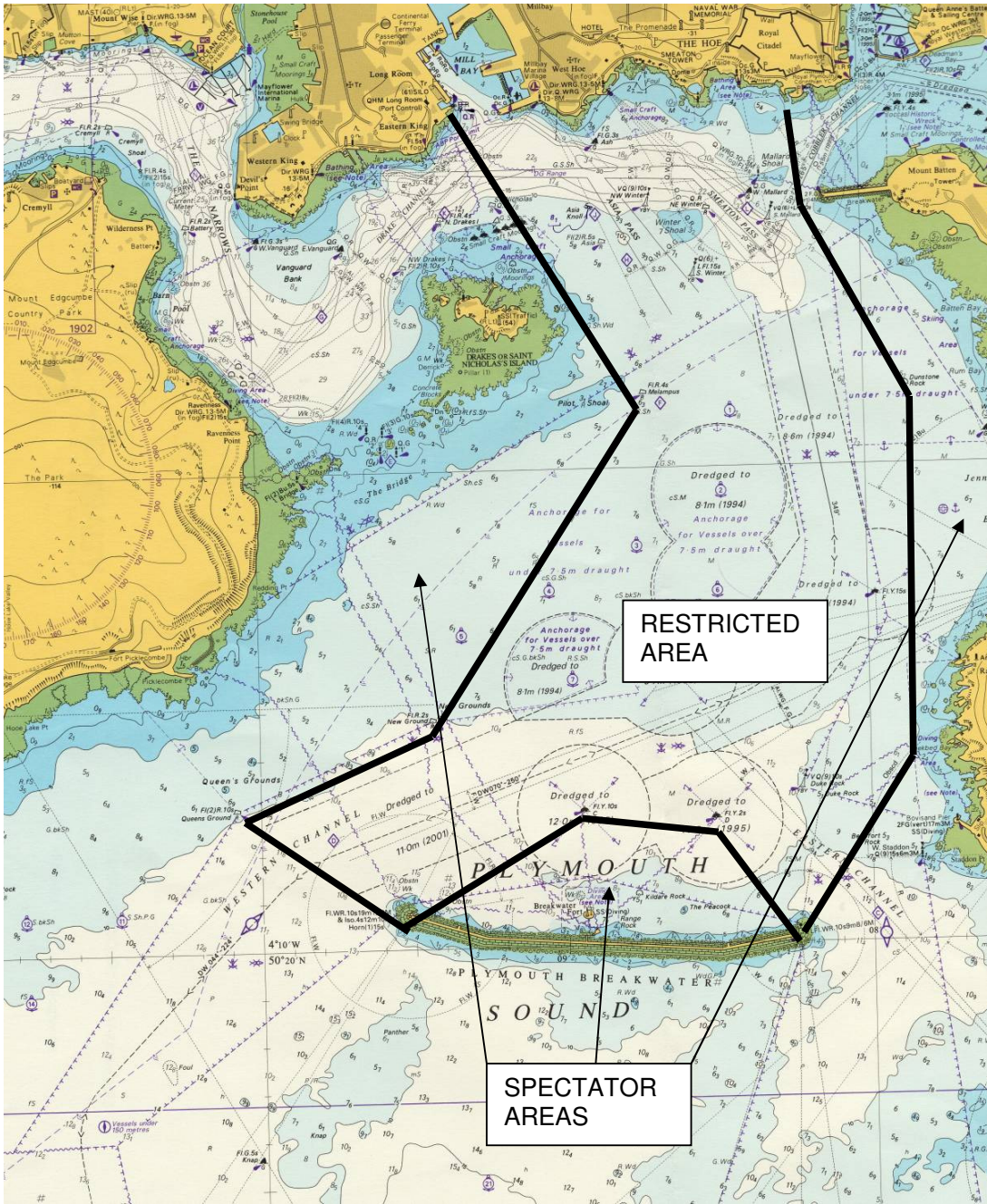
14. Cancel this Notice on 19 September 2011.

25 August 2011



C NECKER
Commander Royal Navy
Queen's Harbour Master Plymouth

CHARTLET SHOWING RESTRICTED AREA AND SPECTATOR AREA



Spectator Areas shown are indicative and will change on a daily basis dependant on spectator numbers and wind direction. They will be marked by stake boats and patrolled by marshal craft.

AMERICAS CUP RACE PROGRAMME

Saturday 10 September 2011	
1300	Race and Spectator Areas secured
1400	Pre-race countdown
1410-1430	Fleet Race 1
1445-1505	Fleet Race 2
1505	Brittany Ferry sails from Millbay
1520-1540	Fleet Race 3
1555-1625	Speed racing
Sunday 11 September	
1400	Race and Spectator Areas secured
1450	Pre-race countdown
1500-1540	Fleet Race
1540	Brittany Ferry sails from Millbay
Monday 12 & Tuesday 13 September – Practice and Rest Days	
Wednesday 14 September	
1300	Race and Spectator Areas secured
1410	Pre-race countdown
1420-1440	Fleet Race 1
1450-1510	Fleet Race 2
1510	Brittany Ferry sails from Millbay
1520-1540	Fleet Race 3
1550-1610	Match Race 1 Quarter Final
1615-1635	Match Race 2 Semi Final
1640-1700	Match Race 3 Final
Thursday 15 September	
1300	Race and Spectator Areas secured
1410	Pre-race countdown
1420-1440	Fleet Race 1
1450-1510	Fleet Race 2
1520-1540	Fleet Race 3
1540	Brittany Ferry arrives at Breakwater
1550-1610	Match Race 1 Quarter Final
1615-1635	Match Race 2 Semi Final
1640-1700	Match Race 3 Final
Friday 16 September	
1300	Race and Spectator Areas secured
1410	Pre-race countdown
1420-1440	Fleet Race 1
1450-1510	Fleet Race 2

1520-1540	Fleet Race 3
1550-1610	Match Race 1 Quarter Final
1615-1635	Match Race 2 Semi Final
1640-1700	Match Race 3 Final
Saturday 17 September	
1300	Race and Spectator Areas secured
1410	Pre-race countdown
1420-1440	Match Race 1 Quarter Final
1445-1505	Match Race 2 Quarter Final
1505	Brittany Ferry sails from Millbay
1525-1545	Match Race 3 Semi Final
1550-1610	Match Race 4 Semi Final
1620-1640	Match Race 5 Final
1650-1710	Match Race 6 Final
Sunday 18 September	
1400	Race and Spectator Areas secured
1500	Pre-race countdown
1510-1550	Fleet Race
1600	Brittany Ferry sails from Millbay